

COLLEGE STRUCTURE
Teaching and Learning
From: May 2024

Exec Members SLT Members
 CMT Members LM = Learning Managers

Bournemouth & Poole College

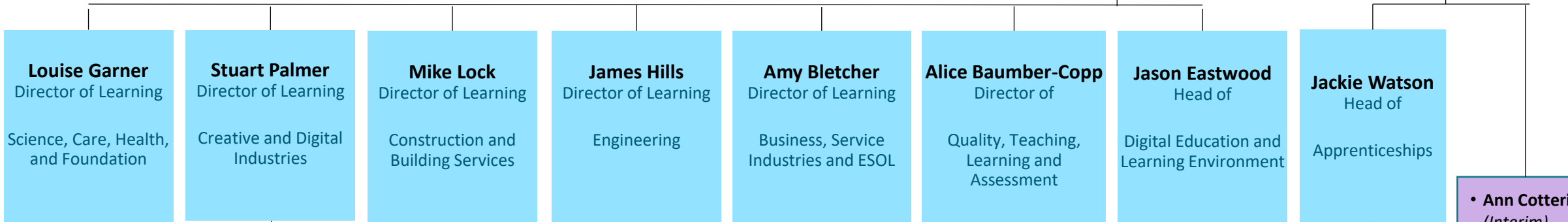
Chair: David Ford
 BOARD OF THE CORPORATION

Marianne Barnard
 Director of Governance

Phil Sayles
 Principal and Chief Executive

Sharon Littlefield
 EA to Principal/Deputy Clerk

S Atkinson, S Howard, A Brown
 EAs to VP Curriculum, Chief Operating Officer, Exec Directors



- Hilary Gallagher**
LM Science, Health & Humanities
- Nicola Keep**
LM Early Years & Care
- Paula Lock**
LM Foundation
- Barney Selman**
Head of English & Maths
- Steve Bell**
LM Media
- James Greenwood**
LM Music & Performing Arts
- Gary Mant**
LM Art & Design
- Bina Howard**
LM Digital & Computing
- Brittany Claxton**
LM Construction & Built Environment
- Darren Parker**
LM Building Services
- Steve Burns**
LM Engineering
- Peter Leech**
LM Automotive & Marine
- Vanessa McMullen**
ESOL Manager
- Judith Grandjean**
LM Business, Tourism & Sports
- Tracy Butler**
LM Service Industries
- Jenya Demchenko**
International Operations Manager
- Helen Fairhall**
Senior Team Leader Teacher Training
- Fran Bove**
Quality Assurance Manager
- Eva Mosquera**
Quality Manager
- Angelique Atack**
Barry Dawson
Craig Robinson
Apprenticeship Managers
- Ann Cotterill (Interim)**
Head of HE
- Vanessa McMullen**
Adult Skills Manager
- Stella Oxford-Rose**
Apprenticeship Manager - Admin & Compliance