

**COLLEGE STRUCTURE**  
**Teaching and Learning**  
**From: April 2024**

Exec Members    SLT Members  
 CMT Members    LM = Learning Managers

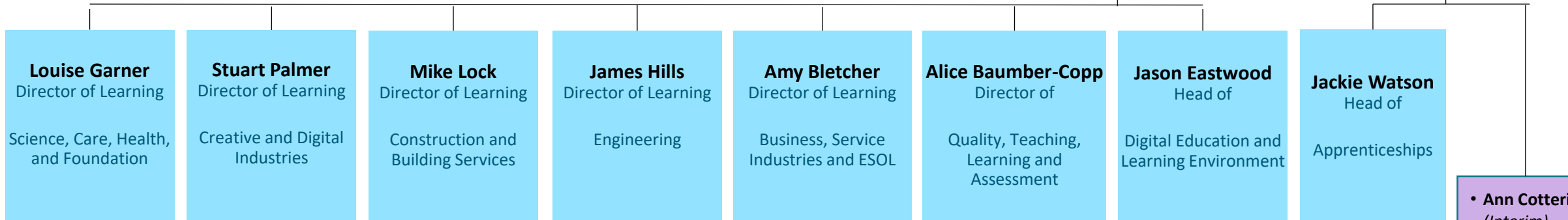
**Chair: David Ford**  
 BOARD OF THE CORPORATION

**Marianne Barnard**  
 Director of Governance

**Phil Sayles**  
 Principal and Chief Executive

**Sharon Littlefield**  
 EA to Principal/Deputy Clerk

**S Atkinson, S Howard, A Brown**  
 EAs to VP Curriculum, Chief Operating Officer, Exec Directors



- Hilary Gallagher  
LM Science, Health & Humanities
- Nicola Keep  
LM Early Years & Care
- Paula Lock  
LM Foundation
- Barney Selman  
Head of English & Maths

- Steve Bell  
LM Media
- James Greenwood  
LM Music & Performing Arts
- Gary Mant  
LM Art & Design
- Bina Howard  
LM Digital & Computing

- Brittany Claxton  
LM Construction & Built Environment
- Darren Parker  
LM Building Services

- Steve Burns  
LM Engineering
- Peter Leech  
LM Automotive & Marine

- Vanessa McMullen  
ESOL Manager
- Judith Grandjean  
LM Business, Tourism & Sports
- Tracy Butler  
LM Service Industries
- Jenya Demchenko  
International Operations Manager

- Helen Fairhall  
Senior Team Leader  
Teacher Training
- Fran Bove  
Quality Assurance Manager
- Eva Mosquera  
Quality Manager

- Angelique Atack  
Barry Dawson  
Craig Robinson  
Apprenticeship Managers

- Ann Cotterill  
(Interim)  
Head of HE
- Vanessa McMullen  
Adult Skills Manager
- Stella Oxford-Rose  
Apprenticeship Manager - Admin & Compliance