

Applied Science



*Congratulations on choosing an
Applied Science Course
starting in September 2020!*

We are a large curriculum area delivering a wide range of courses in Science, Health & Social Care, Child Care, Access to Higher Education, and Counselling; as well as Apprenticeships in Health Care, Health & Social Care, Child Care & Dental Nursing.

You have chosen to study one of the following courses as Part of a Study Programme:

Level 1 Diploma in Science

Level 2 Diploma in Science

Level 3 Year 1 Foundation Diploma in Applied Science

Level 3 Year 2 Diploma in Forensic Science or Medical Science

As well as the main course, your Study Programme also includes

Maths

English

Tutorials

Personal Development

Employability

Work Experience

Course Details

- Your course will run over 3 days per week.
- We expect you to have 100% attendance in all lessons
- Book your holiday's during the college holidays, and not in term time.

Course Enrolment

You will be sent a letter inviting you to our enrolment day at the end of August, you must bring with you:

ID (Birth Certificate/Passport)

Course fees (books/materials)

GCSE Certificates/ Results slips

Don't worry if you haven't achieved the GCSE results you were hoping for, we will be able to offer you a place on an alternative course in science.

Work Placement

Work placement is a mandatory requirement of your course. It is a great opportunity for you to gain experience, knowledge and work skills from within the Science/Health sectors. You can choose the area in which you would like to complete a work placement provided it is relevant to the science course and your future career path. You cannot use your place of work if you have a part-time job.

The work placement team at the college will arrange your work placement for you, after checking it is safe and appropriate for you to go there.

Between now and September research where you would like to go on placement, record the details here to give the Work Placement Team at the start of the course:

1st Choice:

Organisation:

Contact Name:

Address:

.....

Telephone Number:

Reason for choosing this employer.....

2nd Choice:

Organisation:

Contact Name:

Address:

.....

Telephone Number:

Reason for choosing this employer.....

Enrichment

The student experience is enhanced through educational visits and fun trips, include:

The Houses of Parliament	The Hunterian Museum
Body Worlds Exhibition	LUSH
Winter Wonderland & London	Bowling
The Old Bailey & Royal Courts of Justice	

Preparation for the Course

In this section we have included a variety of websites, books and journals for you have a look at in preparation for starting your science course; as well as careers information and some activities for you to complete.

Useful websites:

www.biologymad.com

www.cellsalive.com

www.chemguide.com

<https://phet.colorado.edu/en/simulations/category/physics>

<https://www.youtube.com/watch?v=5fykPljB9Zk> (search backyard scientist on YouTube)

<https://www2.grenfell.mun.ca/physics/physlets.html>

Books:

CGP Revision guides (Chemistry, Biology and Physics)

Journal Articles:

We recommend having a look at the new scientist for up to date news and developments within the science industry

<https://www.newscientist.com/>

Careers in Science – Research your career path now...

Careers Assessment

Which career is right for you? Find out by using the following link, Match your personality with an animal type, and then suitable careers <https://icould.com/buzz-animals/>- scroll down on the webpage to click on 'Take the Buzz quiz'.

Where can I work in science?

With further training, science courses can lead to working in the following professions:

Biomedicine	Marine Biologist	Pathology
Criminology	Medicine	Pharmacist
Dental Hygiene	Midwifery	Physiotherapy
Forensic Science	Nursing	Psychology
Health Care Assistant	Nutrition	Radiography
Lab Technician	Paramedic	Support Worker

Useful Careers Websites

<http://www.sciencecareerpathways.com/home/>

<https://www.healthcareers.nhs.uk/>

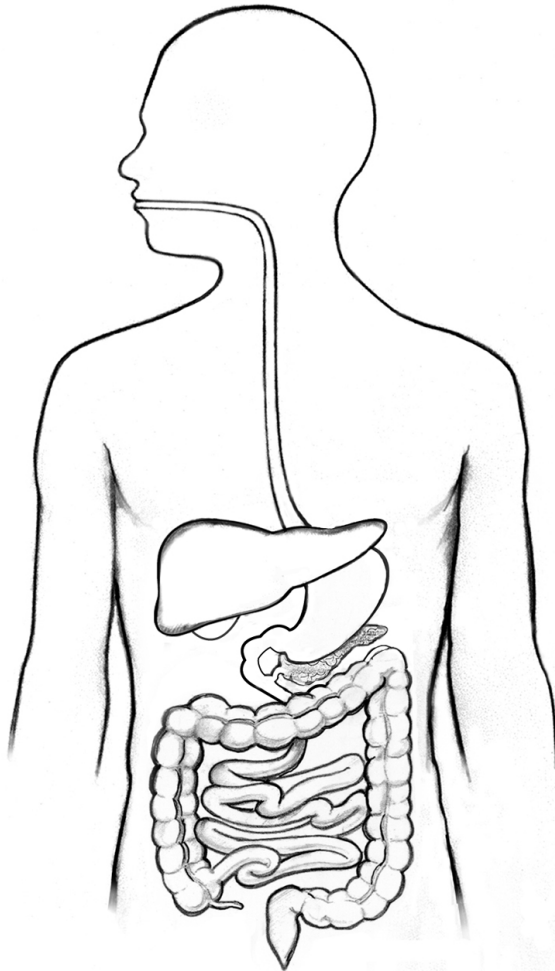
<https://www.prospects.ac.uk/careers-advice>

Which university courses could I apply for, from L3 Science?

BSc (Hons) Biomedical Science	BSc (Hons) Medical Science
BSc (Hons) Biological Sciences	BSc (Hons) Midwifery
BA (Hons) Criminology	BSc (Hons) Nursing
BSc (Hons) Dental Hygiene	BSc (Hons) Nutrition
BSc (Hons) Diagnostic Radiography	BSc (Hons) Occupational Therapy
BSc (Hons) Environmental Science	BSc (Hons) Paramedic Science
BSc (Hons) Forensic Science	BSc (Hons) Physiotherapy
BSc (Hons) Health Science	BSc (Hons) Psychology

Activity 1 Biology: The Digestive System

1. Colour in the organs of the digestive system



2. Label the organs of the digestive system and research their functions

- Mouth & Pharynx
- Oesophagus
- Liver & Gall bladder
- Pancreas
- Stomach
- Small Intestine
- Large intestine
- Rectum & Anus

Activity 3 Physics: Bending Light

1. Follow the link

https://phet.colorado.edu/sims/html/bending-light/latest/bending-light_en.html

2. Play about with 'bending' light.
3. Change the density of the materials and note what happens.
4. Why does the light change direction when going from **less dense to more dense**, but reflect backwards when going from **more dense to less dense**?

Notes

.....

.....

.....

.....

.....

.....

We hope you have enjoyed the activities and research in science, and look forward to welcoming you to the course in September 2020,

The Science Team

Follow the college on:

<https://www.facebook.com/BPCollege/>

<https://twitter.com/BPCollege>

<https://www.instagram.com/thebpcollege/?hl=en>